



ST. JOHN'S UNIVERSITY

CONFERENCE SERVICES



ST. JOHN'S UNIVERSITY

QUEENS
8000 Utopia Parkway
Queens, NY 11439

STATEN ISLAND
300 Howard Avenue
Staten Island, NY 10301

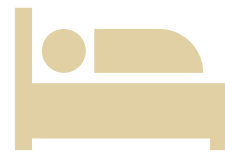
MANHATTAN
101 Astor Place
New York, NY 10003

Office of Conference Services
ROTC Building, Second Floor, Suite 206B, Queens Campus
718-990-7300
csevents@stjohns.edu

stjohns.edu/conference-services



The first residence hall was built on the Queens campus in 1999.



More than 3,300 beds are available for summer camps, conferences, and events requiring accommodations.

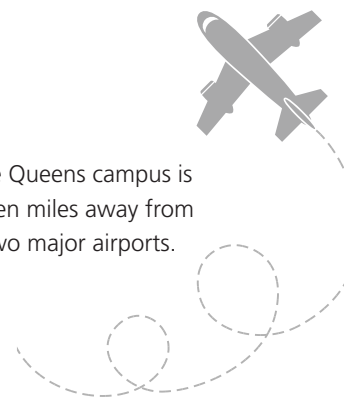


Our Montgoris Dining Hall can accommodate up to 1,000 guests per hour.

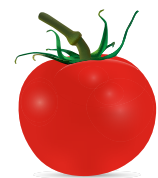


More than 5,000 conference participants were hosted in 2016.

FAST FACTS



The Queens campus is seven miles away from two major airports.



The University's student community garden harvests more than 1,000 pounds of organic vegetables annually.



There are more than 3,000 trees on the Queens campus.

The University composts 9,000 pounds of food scraps each week.



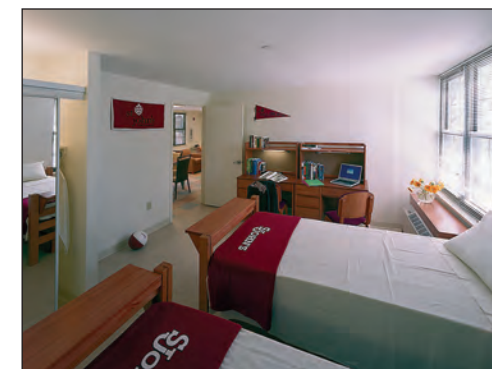
A multitude of options for housing are available when booking overnight accommodations at St. John's University. All residential facilities are fully equipped with individual heating and cooling units. The Residence Village on the Queens campus primarily consists of suite-style housing, but also offers traditional, corridor-style housing as well. Both the Founder's Village Townhouses and the Henley Road Apartment Complex offer apartment-style living with a full kitchen and common area. Staten Island campus accommodations reflect garden-style living nestled within a quaint community.



RESIDENCE VILLAGE

Suite-style with kitchenette

- ◆ Four bedrooms in combination of single, double, or triple occupancy, with twin-size beds, a desk chair, desk, and dresser/storage drawers
- ◆ Two bathrooms with stand-in shower, vanity, and toilet
- ◆ Kitchen cabinetry with microwave and small refrigerator
- ◆ Dining area with dining table and four chairs
- ◆ Living area with cushioned sofa, coffee table, and two cushioned chairs
- ◆ 24-7 desk security



RESIDENCE VILLAGE

Traditional, corridor style

- ◆ Two bedrooms in combination of triple or quad, with twin-size beds, a desk chair, desk, and dresser/storage drawers
- ◆ One bathroom with stand-in shower, vanity, and toilet
- ◆ Bathroom adjoins two bedrooms
- ◆ 24-7 desk security

RESIDENCE VILLAGE

Founder's Village and Henley Road Apartment Complex

- ◆ Three or four bedrooms in combination of double or triple occupancy, with twin-size beds, a desk chair, desk, and dresser/storage drawers
- ◆ Two bathrooms with stand-in showers, vanity, and toilet
- ◆ Kitchenette with full refrigerator/freezer unit, stove/oven unit, and cabinetry
- ◆ Dining area with dining table and six chairs
- ◆ Living area with cushioned sofa, coffee table, and two cushioned chairs



GARDEN-STYLE APARTMENTS

- ◆ Two or three bedrooms in combination of single, double, or triple occupancy, with twin-size beds, a desk chair, desk, and dresser
- ◆ Living area includes a cushioned sofa, coffee table, lounge chair, dining table, and dining chairs
- ◆ One bathroom and full-service kitchen with refrigerator/freezer unit, microwave, and stove

ATHLETIC FACILITIES



CARNESECCA ARENA

Carnesecca Arena ranks as the fourth largest indoor arena in the metropolitan area, with a seating capacity of 5,602. Home to sports such as basketball, volleyball, and fencing, the facility also hosts large-scale events such as concerts, conferences, graduations, and professional training events. Access to the ticket window and ticket operations is available.



BELSON STADIUM

Uniquely situated on a raised platform with parking underneath, the soccer stadium has seating for 2,168 fans, as well as lighting, private suites and media room, and a press box.



JACK KAISER STADIUM

The stadium is one of the premier facilities for collegiate baseball in the BIG EAST, as well as one of the top in the northeast. The facility boasts seating for 3,500 spectators, an electronic scoreboard in center field, a press box, lighting, and a public address system.

ATHLETIC FACILITIES



DASILVA MEMORIAL FIELD

DaSilva Memorial Field is home to the men's lacrosse and women's track and field teams, and has a seating capacity of 1,200. The press box is readily available adjacent to the facility. The track was renovated in the fall of 2013, while the turf was replaced in the summer of 2016.

TAFFNER FIELD HOUSE

This 43,000-square-foot facility serves as the practice space for our basketball and volleyball teams. It boasts four full-size basketball or volleyball courts, a media room, and men's and women's locker rooms.



THE COURTS AT ST. JOHN'S

The Courts at St. John's serve as home to our tennis teams. Located adjacent to Taffner Field House, the five tennis courts are open daily throughout the year and have lighting for evening play.

RED STORM FIELD

Red Storm Field is home to St. John's University's softball team. The facility is equipped with an electronic scoreboard and a public address system, and has a seating capacity of 250.

GYMNASIUM AT STATEN ISLAND CAMPUS

Capacity limit of 1,100 guests. The gymnasium is located within the Campus Center in the heart of this quaint 60+ acre campus.



MEETING FACILITIES AND CLASSROOMS

St. John's University has more than 75 different meeting facilities and over 200 classrooms available for reservation. Setup styles support a wide range of needs, and can vary from traditional classroom, hollow square, lecture, conference, banquet, table groups, and U-shape.



THE D'ANGELO CENTER MULTIPURPOSE ROOM

This space has a capacity of 300+ people at 4,395 sq. ft. The main room can be divided into three individual rooms, or two rooms. A dance floor can also be utilized in this facility. Prefunction area overlooks the New York City skyline.

ST. LOUISE DE MARILLAC HALL, AUDITORIUM

Slated for renovation in the summer of 2017. Seating capacity will exceed 550 at 4,150 sq. ft.

ST. LOUISE DE MARILLAC HALL, TERRACE

This multipurpose facility can be divided into two meeting facilities or remain one large facility. The large facility has seating capacity for 450 people at 6,256 sq. ft.

MEETING FACILITIES AND CLASSROOMS

THE LITTLE THEATRE

This theater space recently underwent a full technology upgrade to include theatrical lighting and sound. It includes seating capacity for 411 people at 3,575 sq. ft. Dressing rooms available.

UNIVERSITY CENTER, SUITE D

This 1,508-sq.-ft. facility has capacity for 70+ guests with A/V capabilities including interactive smart board technology, video conferencing technology, and teleconferencing technology.

FACULTY CLUB

Traditionally servicing on-campus faculty dining needs, this private dining area has seating capacity for 64 people at 1,765 sq. ft.

BENT HALL

Opened in April 2017, this newly renovated multipurpose space can accommodate 96 seats at 1,250 sq. ft. An outdoor reception patio is also available.

KIERNAN SUITE AT STATEN ISLAND CAMPUS

This is the primary meeting facility on campus with seating for 120. Floor-to-ceiling windows overlook the Hudson River.

MULTIPURPOSE ROOM AT MANHATTAN CAMPUS

Ground-level meeting facility with floor-to-ceiling windows. Capacity of 130+ guests at 1,727 sq. ft. Classroom rental available as well.



DINING AND CATERING



SAMPLE CATERING MENU

The All American Scrambled Eggs Seasoned Breakfast Potatoes Crispy Bacon or Country Sausage Seasonal Fruit Platter Mini Bagels w/ Butter/Cream Cheese/Preserves Freshly Brewed Regular and Decaf Coffee Assortment of Teas/Juices	Healthy Start Yogurt Parfait w/ Granola, Fresh Berries, and Low-Fat Yogurt Low Fat Breakfast Loaf Freshly Brewed Regular and Decaf Coffee Assortment of Teas	Salad Luncheon Choice of Spinach, Greek, Cobb, Chicken Caesar, Chef, or Antipasto Salad Mini Rolls Seasonal Fruit Platter Homemade Cookies and Brownies Assorted Soda Bottled Water	South of the Border Tortilla Chips w/ Salsa & Guacamole Assorted Soda Bottled Water	Carving Station Roasted Loin of Pork w/Bourbon Glaze Mini Rolls Accompaniments Assorted Soda Bottled Water
---	---	--	---	--



DINING AND CATERING

St. John's University, in partnership with Chartwells, offers a variety of fresh dining options, including a catered-specific menu or our all-you-care-to-eat meal plan. Catering options range from a simple afternoon sweets break, cocktail hour with passed hors d'oeuvres, to an extensive china-plated dinner menu with prime choice meats.



CAMPUS DINING LOCATIONS

Queens Campus

- D'Angelo Center Food Court
- Dunkin' Donuts*
- Faculty Club
- Law School Café and Sidebar*
- Marillac Hall Food Court
- Marillac Terrace Grill
- Montgoris Dining Hall*
- Red Mango and Library Café
- Red Storm Diner
- Starbucks
- The Marketplace

Staten Island Campus

- Staten Island Café*

*Open during summer conference season

SAMPLE MEAL PLAN MENU

	MONDAY	TUESDAY	WEDNESDAY	THURSDAY	FRIDAY	SATURDAY	SUNDAY
BREAKFAST 7:00 a.m. - 9:00 a.m.	Baked Peasant Potatoes Egg & Cheese on a Croissant Pancakes Fruit Yogurt	Baked Tater Tots Egg & Cheese on English Muffin French Toast Sticks Fruit Yogurt	Bakes Home Fries Egg & Cheese Biscuit Sandwich Banana Pancakes Fruit Yogurt	Baked Diced Red Bliss Potatoes Egg White Scramble w/ Spinach & Tomato Chocolate Chip Pancakes Fruit Yogurt	Hash Brown Patties English Muffin w/ Ham, Bacon, Egg & Cheese Sandwich Whole Wheat Banana Pancakes Fruit Yogurt	Baked Tater Tots Breakfast Burrito Ham & Vegetable Frittata Fruit Yogurt	Baked Home Fries w/ Peppers & Onions Mediterranean Whole Wheat Bagel Sandwich Texas French Toast Fruit Yogurt
LUNCH 11:30 a.m. - 1:30 p.m.	Soup Deli Meats Burgers/Chicken/Hot Dogs Specialty Pizza Chicken Marsala Garlic Orzo Vegetable of the Day	Soup Deli Meats Burgers/Chicken/Hot Dogs Specialty Pizza Korean BBQ Beef Lo Mein Noodles Roasted Zucchini	Soup Deli Meat Burgers/Chicken/Hot Dogs Specialty Pizza Chicken Portabella Poblano Brown Rice & Beans Steamed Vegetable Medley	Soup Deli Meat Burgers/Chicken/Hot Dogs Specialty Pizza BBQ Curried Chicken Basmati Rice Almond Green Beans	Soup Deli Meat Burgers/Chicken/Hot Dogs Specialty Pizza Baked Tilapia Vera Cruz Farro Mushroom Risotto Steamed Baby Carrots	Soup Deli Meat Burgers/Chicken/Hot Dogs Specialty Pizza Beef Pot Pie Scalloped Potatoes Steamed Vegetable Medley	Soup Deli Meat Burgers/Chicken/Hot Dogs Specialty Pizza Asian Grilled Salmon Rice Noodles & Vegetables Curried Roasted Vegetables
DINNER 5:00 p.m. - 8:00 p.m.	Deli Meats Burgers/Chicken/Hot Dogs Specialty Pizza Salad Bar Hungarian Pork Chop Spinach Rice Pilaf Vegetable Medley	Soup Deli Meats Burgers/Chicken/Hot Dogs Specialty Pizza Salad Bar Beef Steak Parmesan Herbed Brown Rice Dilled Carrots & Zucchini	Soup Deli Meats Burgers/Chicken/Hot Dogs Specialty Pizza Salad Bar Jerk Beef Brisket Jasmine Rice Roasted Vegetables	Soup Deli Meats Burgers/Chicken/Hot Dogs Specialty Pizza Salad Bar Chicken Cordon Bleu Jasmine Pilaf w/ Mushrooms & Peas Green Beans w/ Tomato & Basil	Soup Deli Meats Burgers/Chicken/Hot Dogs Specialty Pizza Salad Bar Wild Salmon w/ Asian Glaze Wild Rice Medley Glazed Carrots	Soup Deli Meats Burgers/Chicken/Hot Dogs Specialty Pizza Salad Bar Chicken Mushroom Dijon Dijon Roasted Potatoes Baked Plantains	Soup Deli Meats Burgers/Chicken/Hot Dogs Specialty Pizza Salad Bar Cajun Chicken Stew Cajun Style Rice & Beans Broccoli w/ Roasted Garlic

SPECIAL SERVICES



PARKING

The Queens campus has in excess of 2,500 parking spaces available amongst five general parking lots. Temporary parking permits may be obtained by the Office of Public Safety at no charge.

WI-FI ACCESS is readily available at all campus locations and accessed through the SJU guest network.

INFORMATION TECHNOLOGY

While most classrooms and meeting facilities are equipped with state-of-the-art technology, our Information Technology personnel are readily available to assist for preplanning and onsite needs.

ENGLISH LANGUAGE LESSONS

The Language Connection provides English as a Second Language courses for students at all proficiency levels. Courses can be designed for teens, college students, or adults, and can be customized to meet the needs and interests of any group.

NYC CAMP PERMIT HOLDER

The health and safety of our minor guests are top priority. St. John's University secures a New York City Department of Health Youth Camp permit (CAMIS number: 50009434). Our camp program provides an infirmary with 24 hour onsite medical assistance and first aid qualified supervision both on and off campus.



SPECIAL SERVICES



LINEN SERVICE

Linen packs are available for rental to our summer conference guests and include a blanket, pillow, bath towel, washcloth, flat sheet, fitted sheet, and pillowcase.

LAUNDRY

Each residential building houses laundry facilities for use free of charge. Multiple washing machines and dryers are available in each location. Detergent is the responsibility of the guest.

CLEANING SERVICE

Cleaning of suite common areas and bathrooms can be made available to summer conference guests at an additional fee.

WATER REFILL STATIONS

In an effort to reduce our carbon footprint, each of our residential buildings offers a water bottle refill station dispensing filtered water at your leisure.

ACCED-I ONE-STOP SHOP CERTIFICATION

The Office of Conference Services at St. John's University has achieved One-Stop Shop Certification through the Association of Collegiate Conference and Events Directors-International (ACCED-I). One-Stop Shop Certification recognizes collegiate operations that deliver one contact, contract, and bill to meeting planners. This streamlining of conferencing and events coordination is intended to more closely match the practices of convention facilities and finer hotels.

